



# GulfTek

SAUDI ARAMCO  
APPROVED 9COM  
MANUFACTURING  
FACILITY

API-CERTIFIED  
MACHINE SHOP

D.N.V 2.7-1,  
CERTIFIED  
FABRICATION  
FACILITY

ASME-U, BOILER &  
PRESSURE VESSEL  
MANUFACTURING

ASME-R, CERTIFIED  
FACILITY

ROTATING  
EQUIPMENT &  
VALVE REPAIR,  
TESTING AND  
RECERTIFICATION

API-6A API-16A API-16C API 7-1 API-5CT  
API-4F API 7-2 API-Q1 ASME-U ASME-R

**Excellence in Manufacturing  
& Engineering Services**

ISO 45001:2018 ISO 14001:2015  
ISO 9001:2015



## ABOUT US



- Established in 2009, at GulfTek we go the extra mile to understand customer needs and produce innovative solutions.
- We are dedicated to deliver reliable engineered products and services as required by our customers when they need it and with the best-in-class quality.
- In order to deliver world class products locally GulfTek has invested in a state-of-the-art manufacturing facility which has 7 API manufacturing licenses to manufacture pressure control, Drilling/ well servicing structures, OCTG and downhole equipment.
- We are proud of our highly experienced engineering and R&D team with capability to design and manufacture API and DNV certified products including, Valves, flow lines, manifolds, offshore baskets and skids as well as deliver excellent engineering services including recertification, rental, static and rotating equipment services.
- Our IKTVA score is the highest amongst our peers in country, and we continue to invest and train our local workforce.

GulfTek will introduce further cutting-edge technologies to the "Made in Saudi" range, truly establishing GulfTek as a regional OEM.

**API-6A API-16A API-16C API 7-1 API-5CT**  
**API-4F API 7-2 API-Q1 ASME-U ASME-R**

**Excellence in Manufacturing  
& Engineering Services**

**ISO 45001:2018 ISO 14001:2015**  
**ISO 9001:2015**



## VISION AND MISSION

- Vision:

To Be The Leading Oilfield Equipment Manufacturer & Service Provider Of Choice.

- Mission:

To Provide Our Customers "Best Quality Products & Services" On Time And To Provide Our Employees "Job Satisfaction" Which Meets And Surpasses Their Expectations.

API-6A API-16A API-16C API 7-1 API-5CT  
API-4F API 7-2 API-Q1 ASME-U ASME-R

**Excellence in Manufacturing  
& Engineering Services**

ISO 45001-2018 ISO 14001:2015  
ISO 9001:2015





# QUALITY CERTIFICATE API-Q1



# GulfTek

DESIGN, MANUFACTURING  
AND SERVICING OF OIL &  
GAS WELLHEAD  
COMPONENTS, PROVISION  
OF THREADING SERVICES,  
FABRICATION OF STEEL  
STRUCTURES

API-6A API-16A API-16C API 7-1 API-5CT  
API-4F API 7-2 API-Q1 ASME-U ASME-R

**Excellence in Manufacturing  
& Engineering Services**

ISO 45001:2018 ISO 14001:2015  
ISO 9001:2015



# QUALITY CERTIFICATE ISO 9001:2015



# GulfTek

DESIGN,  
MANUFACTURING &  
SERVICING OF OIL & GAS  
WELLHEAD  
COMPONENTS  
THREAD SERVICES  
FABRICATION OF STEEL  
STRUCTURE.

API-6A API-16A API-16C API 7-1 API-5CT  
API-4F API 7-2 API-Q1 ASME-U ASME-R

Excellence in Manufacturing  
& Engineering Services

ISO 45001:2018 ISO 14001:2015  
ISO 9001:2015



# GulfTek

## QUALITY CERTIFICATE API-4F



**Certificate of Authority to use the Official API Monogram**  
**License Number: 4F-0483** **ORIGINAL**

The American Petroleum Institute hereby grants to  
**GULF TECHNICAL FACTORY**  
Dammam 2nd Industrial City  
Dammam  
Kingdom of Saudi Arabia

the right to use the Official API Monogram® on manufactured products under the conditions in the official publications of the American Petroleum Institute entitled API Spec Q1® and **API-4F** and in accordance with the provisions of the License Agreement.

In all cases where the Official API Monogram is applied, the API Monogram shall be used in conjunction with this certificate number: **4F-0483**

The American Petroleum Institute reserves the right to revoke this authorization to use the Official API Monogram for any reason satisfactory to the Board of Directors of the American Petroleum Institute.

The scope of this license includes the following: Crown Block Assemblies, Derricks, Masts, Substructures at PSL 1, PSL 2

QMS Exclusions: No Exclusions Identified as Applicable

**Effective Date: MARCH 1, 2024**  
**Expiration Date: MARCH 1, 2027**

*Anchal Liddar*  
Senior Vice President of Global Industry Services

To verify the authenticity of this license, go to [www.api.org/compositelist](http://www.api.org/compositelist).

CROWN BLOCK  
ASSEMBLIES, DERRICKS,  
MASTS, SUBSTRUCTURES at  
PSL 1, PSL 2.

API-6A API-16A API-16C API 7-1 API-5CT  
API-4F API 7-2 API-Q1 ASME-U ASME-R

**Excellence in Manufacturing  
& Engineering Services**

ISO 45001:2018 ISO 14001:2015  
ISO 9001:2015



# GulfTek

## QUALITY CERTIFICATE API-6A



## VALVES & PRESSURE CONTROL EQUIPMENT

API-6A API-16A API-16C API 7-1 API-5CT  
API-4F API 7-2 API-Q1 ASME-U ASME-R

**Excellence in Manufacturing  
& Engineering Services**

ISO 45001:2018 ISO 14001:2015  
ISO 9001:2015





# QUALITY CERTIFICATE API-5CT

# GulfTek



## CASING & TUBING COUPLINGS, X OVERS, PUP JOINTS

API-6A API-16A API-16C API 7-1 API-5CT  
API-4F API 7-2 API-Q1 ASME-U ASME-R

Excellence in Manufacturing  
& Engineering Services

ISO 45001:2018 ISO 14001:2015  
ISO 9001:2015





# QUALITY CERTIFICATE API-7-1



# GulfTek

THREADING FOR  
ROTARY CONNECTIONS  
&  
DRILL STEMS  
SUBS

API-6A API-16A API-16C API 7-1 API-5CT  
API-4F API 7-2 API-Q1 ASME-U ASME-R

Excellence in Manufacturing  
& Engineering Services

ISO 45001:2018 ISO 14001:2015  
ISO 9001:2015



# QUALITY CERTIFICATE API-7-2

# GulfTek



## ROTARY SHOULDERED CONNECTIONS THREADS

API-6A API-16A API-16C API 7-1 API-5CT  
API-4F API 7-2 API-Q1 ASME-U ASME-R

**Excellence in Manufacturing  
& Engineering Services**

ISO 45001:2018 ISO 14001:2015  
ISO 9001:2015



# GulfTek

## QUALITY CERTIFICATE API-16A



## DRILLING & SPACER SPOOLS, ADAPTERS

API-6A API-16A API-16C API-7-1 API-5CT  
API-4F API-7-2 API-Q1 ASME-U ASME-R

**Excellence in Manufacturing  
& Engineering Services**

ISO 45001:2018 ISO 14001:2015  
ISO 9001:2015





# GulfTek

## QUALITY CERTIFICATE API-16C



## CHOKE & KILL MANIFOLDS, HARD LINES

API-6A API-16A API-16C API-7-1 API-5CT  
API-4F API-7-2 API-Q1 ASME-U ASME-R

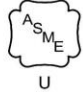
**Excellence in Manufacturing  
& Engineering Services**

ISO 45001:2018 ISO 14001:2015  
ISO 9001:2015



# QUALITY CERTIFICATE ASME-U

# GulfTek

  
U

**CERTIFICATE OF  
AUTHORIZATION**

The named company is authorized by The American Society of Mechanical Engineers (ASME) for the scope of activity shown below in accordance with the applicable rules of the ASME Boiler and Pressure Vessel Code. The use of the ASME Single Certification Mark and the authority granted by this Certificate of Authorization are subject to the provisions of the agreement set forth in the application. Any construction stamped with the ASME Single Certification Mark shall have been built strictly in accordance with the provisions of the ASME Boiler and Pressure Vessel Code.


COMPANY:


**GULF TECHNICAL FACTORY**  
Street 85, Road No.134  
Dammam Second Industrial City  
Dammam 34332  
Saudi Arabia


SCOPE:

Manufacture of pressure vessels at the above location and field sites controlled  
by the above location (This authorization does not cover impregnated graphite)

AUTHORIZED: December 16, 2022  
EXPIRES: December 16, 2025  
CERTIFICATE NUMBER: 60541

  
Board Chair, Conformity Assessment

  
Managing Director, Standards & Engineering Services



The American Society of Mechanical Engineers

## PROCESS EQUIPMENT & VESSELS

API-6A API-16A API-16C API-7-1 API-5CT  
API-4F API-7-2 API-Q1 ASME-U ASME-R

**Excellence in Manufacturing  
& Engineering Services**

ISO 45001:2018 ISO 14001:2015  
ISO 9001:2015



# QUALITY CERTIFICATE ASME-R



# GulfTek

Upgrades &  
Recertifications  
Shop Repairs  
&  
Field Services

API-6A API-16A API-16C API-7-1 API-5CT  
API-4F API-7-2 API-Q1 ASME-U ASME-R

Excellence in Manufacturing  
& Engineering Services

ISO 45001:2018 ISO 14001:2015  
ISO 9001:2015





# QUALITY CERTIFICATE ISO 14001:2015



# GulfTek

Our Commitment to  
Environment & our Planet

API-6A API-16A API-16C API 7-1 API-5CT  
API-4F API 7-2 API-Q1 ASME-U ASME-R

**Excellence in Manufacturing  
& Engineering Services**

ISO 45001:2018 ISO 14001:2015  
ISO 9001:2015



# QUALITY CERTIFICATE ISO 45001:2018



# GulfTek

Our Commitment to Safety  
&  
Wellbeing  
of our Team & Communities

API-6A API-16A API-16C API-7-1 API-5CT  
API-4F API-7-2 API-Q1 ASME-U ASME-R

**Excellence in Manufacturing  
& Engineering Services**

ISO 45001:2018 ISO 14001:2015  
ISO 9001:2015



# ARAMCO 9 COM APPROVAL LETTER

Saudi Arabian Oil Company  
Supplier Relationship Management  
B-102 North Park 2  
Dhahran 31311  
Saudi Arabia

Tel: (966 13) 874-0958  
Fax: (966 13) 874-1495



May 5, 2024

SQU-27-24

Vikas Handa , General Manager  
Gulf Technical Factory  
P.O. BOX 7286  
DAMMAM 34332

Fax : 013 837 6541

Mr. Handa,

We are pleased to inform you that your company is included in the Saudi Aramco Supplier Information System under Vendor Code No. 10065371, and Plant ID 30011609 for the following products provided your company continues to meet relevant Saudi Arabian and Saudi Aramco standards.

9COM	Description
6000007215	FLOW METER: VENTURI TUBE
6000002865	MANIFOLD; VALVE; INSTRUMENT; FLOW METER
6000002742	FLOWMETER: FOR REDUCE PIPING REQUIREMENTS
6000002792	Orifice; Assembly: Plate; Flange; Sealing
6000002845	THERMOWELL; DWG AB-036019;
6000003815*	COUPLING: API GRADE
6000003823*	CROSSOVER: API-5CT
6000003899*	PUP JOINT: CSG; API GR
6000003911*	PUP JOINT: TUBING; API GR

8Approved with Limitation

This approval, however, should not be construed as a commitment by Saudi Aramco to purchase from you. Being approved as a supplier only grant your company the opportunity, along with other approved sources, to respond to requests for submitting proposals in accordance with Saudi Aramco's established policies and procedures. All purchase agreements and orders will be issued based on the name and address stated in your commercial registration (CR), as stated above.

Saudi Aramco wishes to remind you that being recognized as a potential supplier is a privilege which carries with it serious obligations and responsibilities to act in a legal and ethical manner. We wish to remind you of the Saudi Aramco Supplier Code of Conduct (SCOC) which you acknowledged. Failure to abide by the principles set forth in the SCOC can result in adverse actions being taken by Saudi Aramco against you including suspension of you as a supplier. Saudi Aramco also expects each of its suppliers to satisfy each of the requirements of any purchase agreements or orders which might be placed and to act responsibly and reliably as a supply chain supplier.

Page 1 of 2

Saudi Arabian Oil Company (Saudi Aramco), is a company formed by Royal Decree No. M/8 dated 04/04/1409H, and is a joint stock company, with certificate of registration number 2052101150 having its principal office at P.O. Box 1000, Dhahran, Postal Code 31311, Kingdom of Saudi Arabia and a fully paid capital of SAR 60,000,000,000.  
Saudi Aramco: Company General Use

# GulfTek

**Gulf Technical Factory (Aramco Approved  
Plant ID: 30011609) is approved for the  
9COM's / Products listed as under**

1. **6000007215** FLOW METER: VENTURI TUBE
2. **6000002865** MANIFOLD; VALVE; INSTRUMENT; FLOW METER
3. **6000002742** FLOWMETER: FOR REDUCE PIPING REQUIREMENTS
4. **6000002792** Orifice; Assembly: Plate; Flange; Sealing
5. **6000002845** THERMOWELL; DWG AB-036019;
6. **6000003815** COUPLING: API GRADE
7. **6000003823** CROSSOVER: API-5CT
8. **6000003899** PUP JOINT: CSG; API GR
9. **6000003911** PUP JOINT: TUBING; API GR

API-6A API-16A API-16C API 7-1 API-5CT  
API-4F API 7-2 API-Q1 ASME-U ASME-R

**Excellence in Manufacturing  
& Engineering Services**

ISO 45001:2018 ISO 14001:2015  
ISO 9001:2015

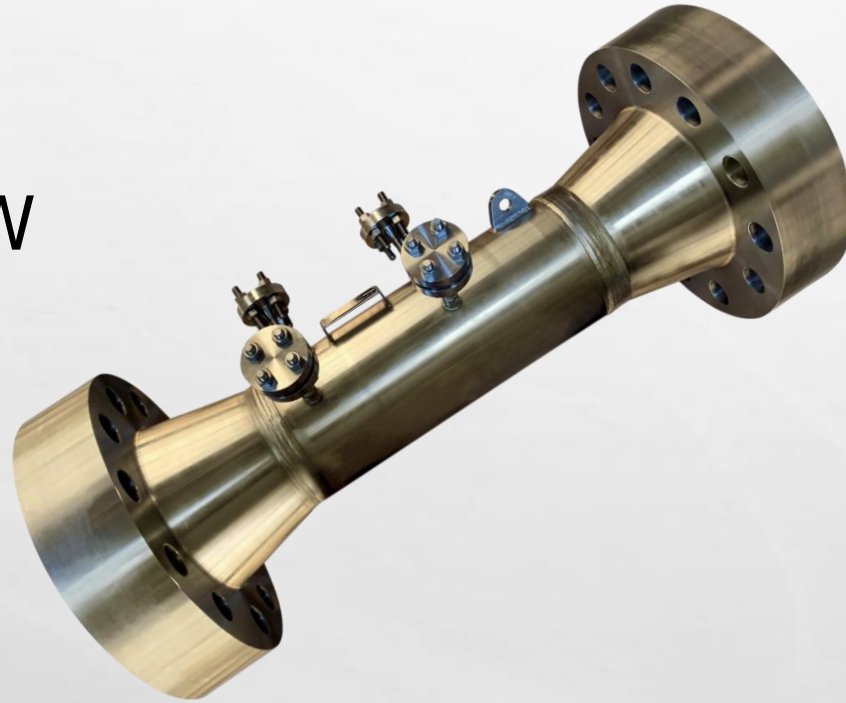




# GulfTek

***9COM: 6000007215***

## VENTURI FLOW METERS



API-6A API-16A API-16C API 7-1 API-5CT  
API-4F API 7-2 API-Q1 ASME-U ASME-R

**Excellence in Manufacturing  
& Engineering Services**

ISO 45001:2018 ISO 14001:2015  
ISO 9001:2015



GulfTek

***9COM: 6000002845***

***DWG: AB-036019***

## THERMOWELLS



API-6A API-16A API-16C API-7-1 API-5CT  
API-4F API-7-2 API-Q1 ASME-U ASME-R

Excellence in Manufacturing  
& Engineering Services

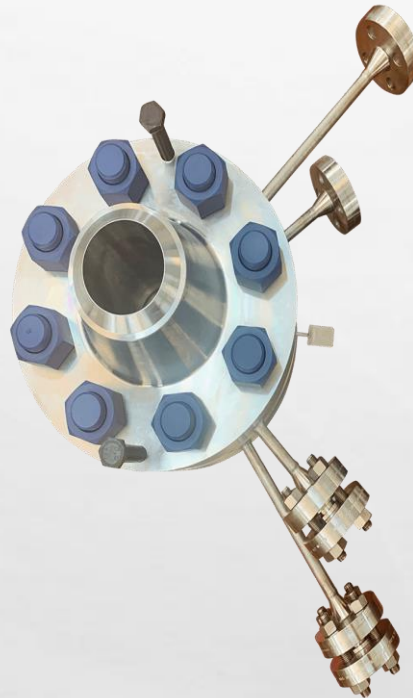
ISO 45001:2018 ISO 14001:2015  
ISO 9001:2015



# GulfTek

***9COM: 6000002792***

ORIFICE  
ASSEMBLY,  
FLANGE,  
PLATE,  
SEALING



API-6A API-16A API-16C API-7-1 API-5CT  
API-4F API-7-2 API-Q1 ASME-U ASME-R

**Excellence in Manufacturing  
& Engineering Services**

ISO 45001:2018 ISO 14001:2015  
ISO 9001:2015





# GulfTek

***9COM: 6000002472***

## **FLOW METER FOR REDUCING PIPING**



**API-6A API-16A API-16C API 7-1 API-5CT  
API-4F API 7-2 API-Q1 ASME-U ASME-R**

**Excellence in Manufacturing  
& Engineering Services**

**ISO 45001:2018 ISO 14001:2015  
ISO 9001:2015**



# GulfTek

***9COM: 6000002865***

MANIFOLD, VALVE  
INSTRUMENT, FLOW  
METER



API-6A API-16A API-16C API 7-1 API-5CT  
API-4F API 7-2 API-Q1 ASME-U ASME-R

**Excellence in Manufacturing  
& Engineering Services**

ISO 45001:2018 ISO 14001:2015  
ISO 9001:2015



# GulfTek

## ***9COM: 6000002738***

Under approval

### ULTRASONIC FLOWMETER



API-6A API-16A API-16C API 7-1 API-5CT  
API-4F API 7-2 API-Q1 ASME-U ASME-R

**Excellence in Manufacturing  
& Engineering Services**

ISO 45001:2018 ISO 14001:2015  
ISO 9001:2015





# GulfTek

## API 6A VALVES & PRESSURE CONTROL EQUIPMENT



API-6A API-16A API-16C API-7-1 API-5CT  
API-4F API-7-2 API-Q1 ASME-U ASME-R

**Excellence in Manufacturing  
& Engineering Services**

ISO 45001:2018 ISO 14001:2015  
ISO 9001:2015



# GulfTek

## API 16 A CHOKE & KILL MANIFOLDS



API-6A API-16A API-16C API 7-1 API-5CT  
API-4F API 7-2 API-Q1 ASME-U ASME-R

**Excellence in Manufacturing  
& Engineering Services**

ISO 45001:2018 ISO 14001:2015  
ISO 9001:2015

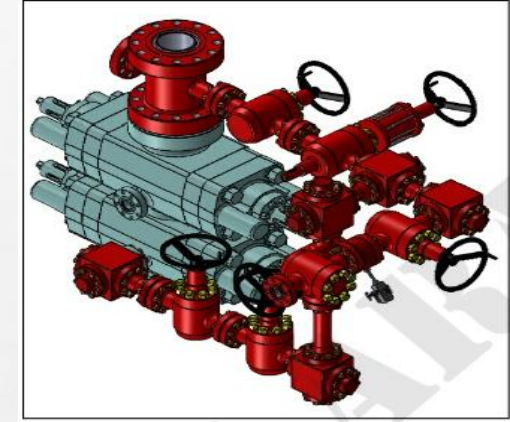




# API 16C C&K MANIFOLDS



# GulfTek



API-6A API-16A API-16C API 7-1 API-5CT  
API-4F API 7-2 API-Q1 ASME-U ASME-R

**Excellence in Manufacturing  
& Engineering Services**

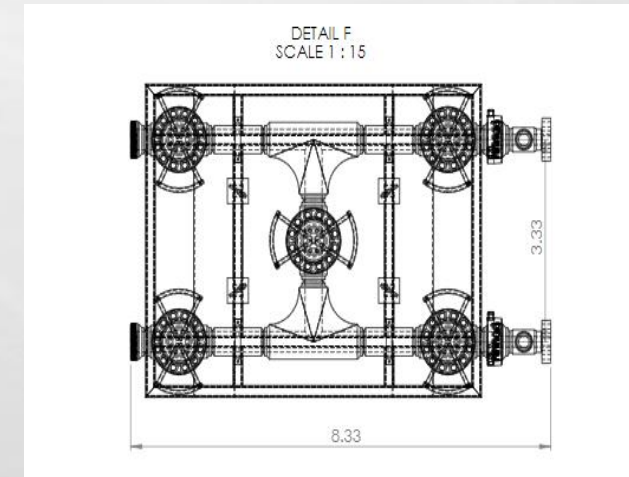
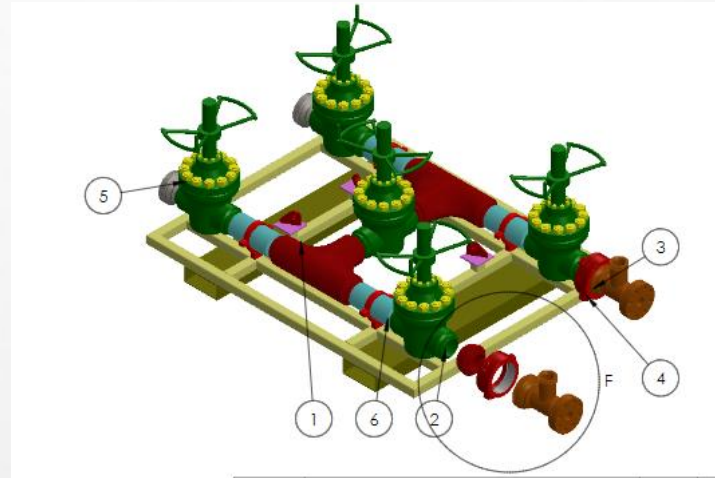
ISO 45001:2018 ISO 14001:2015  
ISO 9001:2015





# GulfTek

## STANDPIPE MANIFOLD



API-6A API-16A API-16C API-7-1 API-5CT  
API-4F API-7-2 API-Q1 ASME-U ASME-R

**Excellence in Manufacturing  
& Engineering Services**

ISO 45001:2018 ISO 14001:2015  
ISO 9001:2015



**GulfTek**

## ZIPPER MANIFOLD



**API-6A API-16A API-16C API 7-1 API-5CT**  
**API-4F API 7-2 API-Q1 ASME-U ASME-R**

**Excellence in Manufacturing  
& Engineering Services**

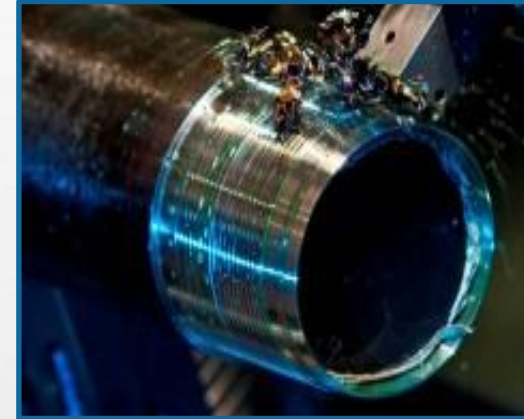
**ISO 45001:2018 ISO 14001:2015**  
**ISO 9001:2015**





# GulfTek

## API 7-1 OCTG & DOWN HOLE PRODUCTS



API-6A API-16A API-16C API 7-1 API-5CT  
API-4F API 7-2 API-Q1 ASME-U ASME-R

**Excellence in Manufacturing  
& Engineering Services**

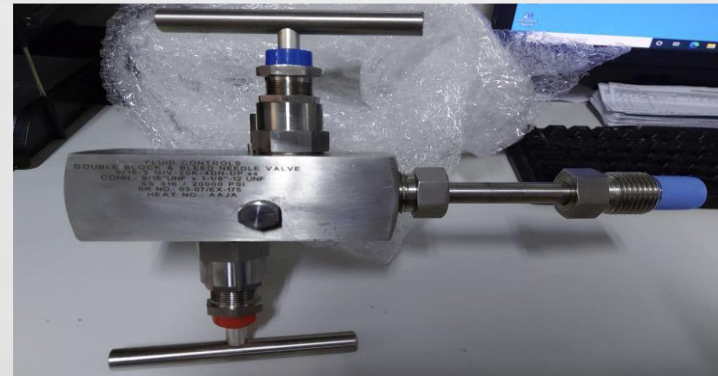
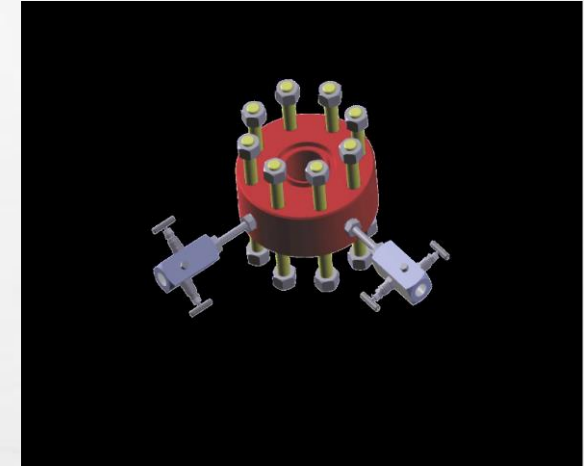
ISO 45001:2018 ISO 14001:2015  
ISO 9001:2015





# GulfTek

## INSTRUMENT FLANGE (DSIF)



API-6A API-16A API-16C API-7-1 API-5CT  
API-4F API-7-2 API-Q1 ASME-U ASME-R

**Excellence in Manufacturing  
& Engineering Services**

ISO 45001:2018 ISO 14001:2015  
ISO 9001:2015



# GulfTek

## D.N.V 2.7-1 BASKET & CONTAINERS



API-6A API-16A API-16C API-7-1 API-5CT  
API-4F API-7-2 API-Q1 ASME-U ASME-R

**Excellence in Manufacturing  
& Engineering Services**

ISO 45001:2018 ISO 14001:2015  
ISO 9001:2015





**GulfTek**

# **API 4F DRILLING & WELL SERVICING STRUCTURES**



**API-6A API-16A API-16C API-7-1 API-5CT  
API-4F API-7-2 API-Q1 ASME-U ASME-R**

**Excellence in Manufacturing  
& Engineering Services**

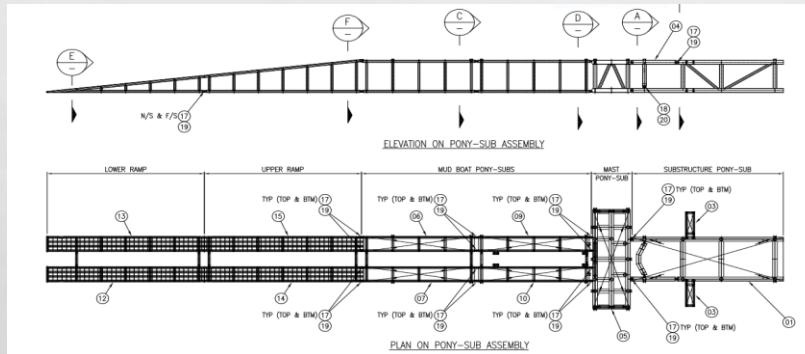
**ISO 45001:2018 ISO 14001:2015  
ISO 9001:2015**





# GulfTek

## API- 4F PONY SUB



API-6A API-16A API-16C API 7-1 API-5CT  
API-4F API 7-2 API-Q1 ASME-U ASME-R

**Excellence in Manufacturing  
& Engineering Services**

ISO 45001:2018 ISO 14001:2015  
ISO 9001:2015



# GulfTek

## ASME-U PROCESS EQUIPMENT & VESSELS



API-6A API-16A API-16C API 7-1 API-5CT  
API-4F API 7-2 API-Q1 ASME-U ASME-R

**Excellence in Manufacturing  
& Engineering Services**

ISO 45001:2018 ISO 14001:2015  
ISO 9001:2015





**GulfTek**

## **ASME-U CHEMICAL INJECTION SKID**



**API-6A API-16A API-16C API 7-1 API-5CT  
API-4F API 7-2 API-Q1 ASME-U ASME-R**

**Excellence in Manufacturing  
& Engineering Services**

**ISO 45001:2018 ISO 14001:2015  
ISO 9001:2015**





# GulfTek

## **API -12J MUD GAS SEPARATOR**



**API-6A API-16A API-16C API 7-1 API-5CT  
API-4F API 7-2 API-Q1 ASME-U ASME-R**

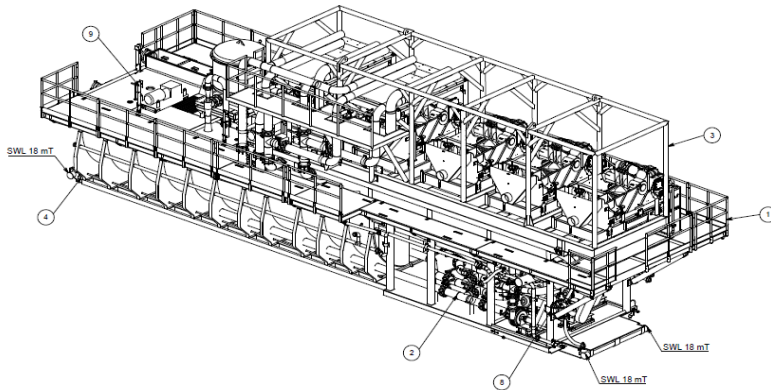
**Excellence in Manufacturing  
& Engineering Services**

**ISO 45001:2018 ISO 14001:2015  
ISO 9001:2015**



# GulfTek

## MUD SYSTEMS



API-6A API-16A API-16C API 7-1 API-5CT  
API-4F API 7-2 API-Q1 ASME-U ASME-R

**Excellence in Manufacturing  
& Engineering Services**

ISO 45001:2018 ISO 14001:2015  
ISO 9001:2015





**GulfTek**

## TRIP TANK



API-6A API-16A API-16C API 7-1 API-5CT  
API-4F API 7-2 API-Q1 ASME-U ASME-R

**Excellence in Manufacturing  
& Engineering Services**

ISO 45001:2018 ISO 14001:2015  
ISO 9001:2015





**GulfTek**

## **DOUBLE WALL DIESEL TANK**



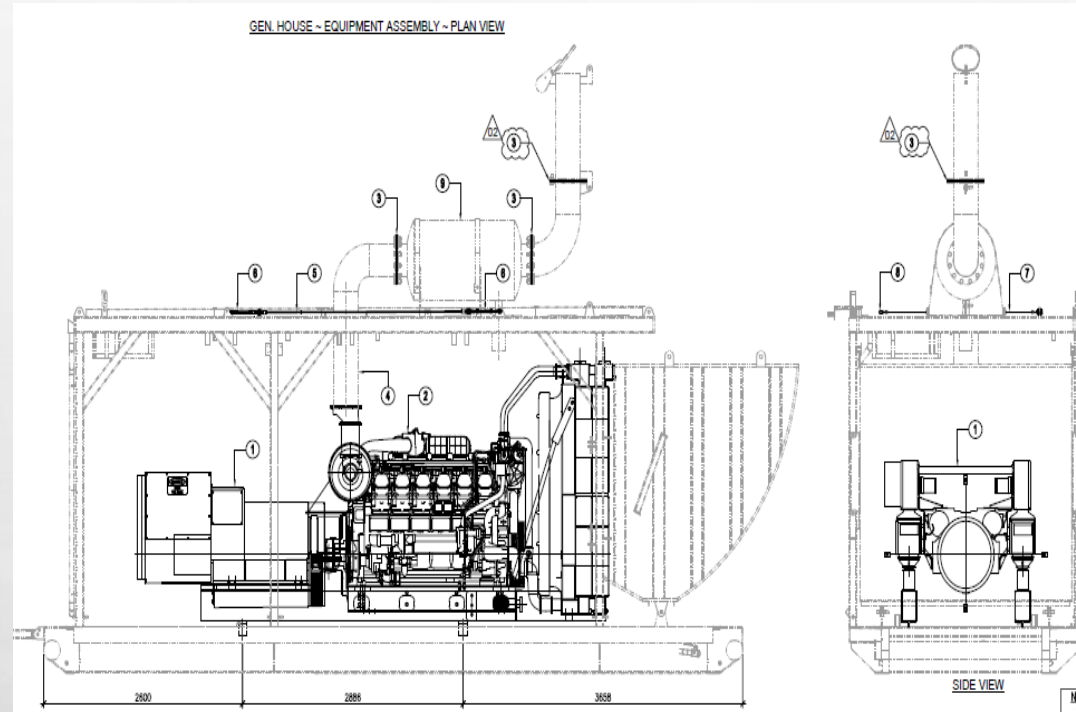
**API-6A API-16A API-16C API 7-1 API-5CT  
API-4F API 7-2 API-Q1 ASME-U ASME-R**

**Excellence in Manufacturing  
& Engineering Services**

**ISO 45001:2018 ISO 14001:2015  
ISO 9001:2015**



# GENERATOR HOUSING



# GulfTek



API-6A API-16A API-16C API-7-1 API-5CT  
API-4F API-7-2 API-Q1 ASME-U ASME-R

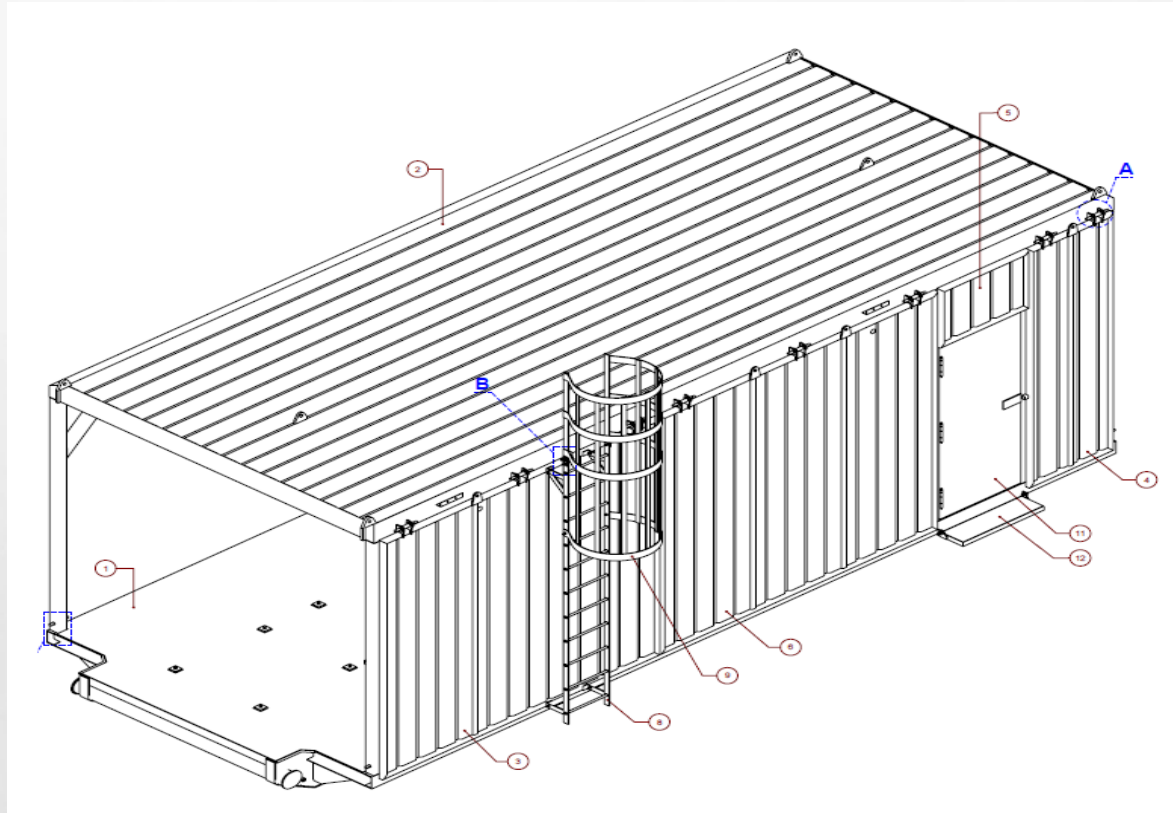
**Excellence in Manufacturing  
& Engineering Services**

ISO 45001:2018 ISO 14001:2015  
ISO 9001:2015



**GulfTek**

## **AIR SYSTEM HOUSE ASSEMBLY**



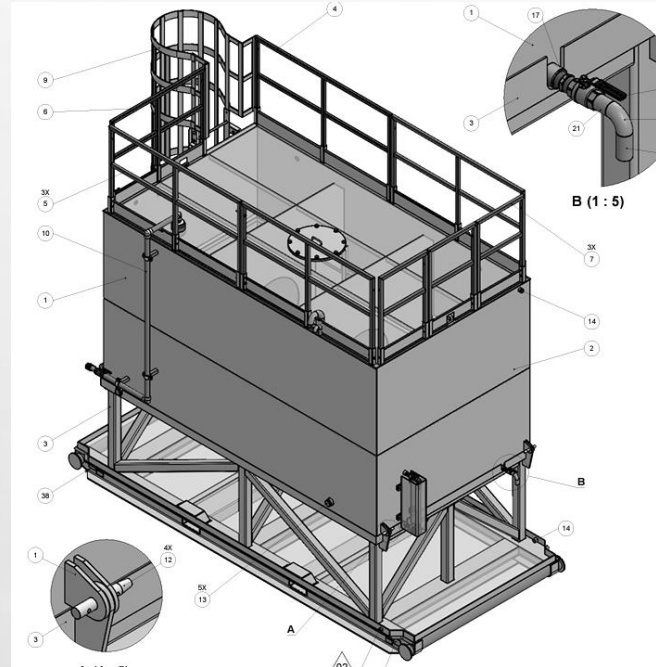
**API-6A API-16A API-16C API 7-1 API-5CT**  
**API-4F API 7-2 API-Q1 ASME-U ASME-R**

**Excellence in Manufacturing  
& Engineering Services**

**ISO 45001:2018 ISO 14001:2015**  
**ISO 9001:2015**



# DAY TANK



**API-6A API-16A API-16C API 7-1 API-5CT**  
**API-4F API 7-2 API-Q1 ASME-U ASME-R**

**Excellence in Manufacturing  
& Engineering Services**

**ISO 45001:2018 ISO 14001:2015**  
**ISO 9001:2015**



**GulfTek**

## **Spectacle Blind, Flange Spade, Ring Spacer for Pipeline Isolation (ASME B16.48)**



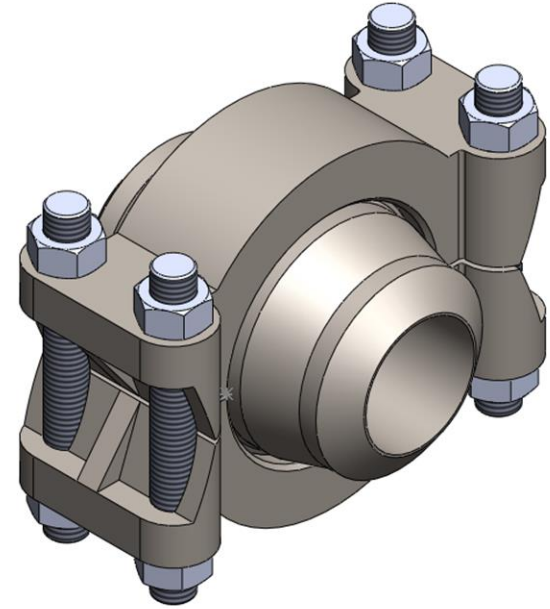
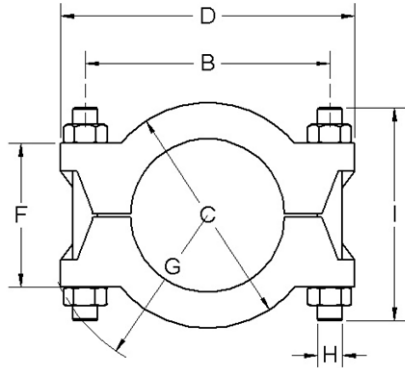
**API-6A API-16A API-16C API 7-1 API-5CT  
API-4F API 7-2 API-Q1 ASME-U ASME-R**

**Excellence in Manufacturing  
& Engineering Services**

**ISO 45001:2018 ISO 14001:2015  
ISO 9001:2015**

## **Hubs and Clamps**

### **ANSI 16.5 or API to 30,000psi**

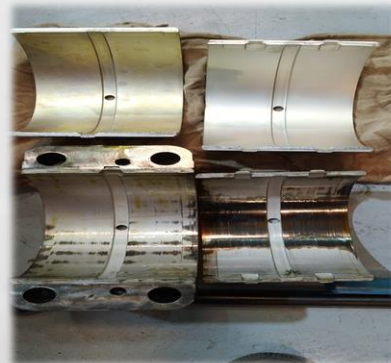






# GulfTek

## GARDNER DENVER SERVICES



API-6A API-16A API-16C API-7-1 API-5CT  
API-4F API-7-2 API-Q1 ASME-U ASME-R

**Excellence in Manufacturing  
& Engineering Services**

ISO 45001:2018 ISO 14001:2015  
ISO 9001:2015

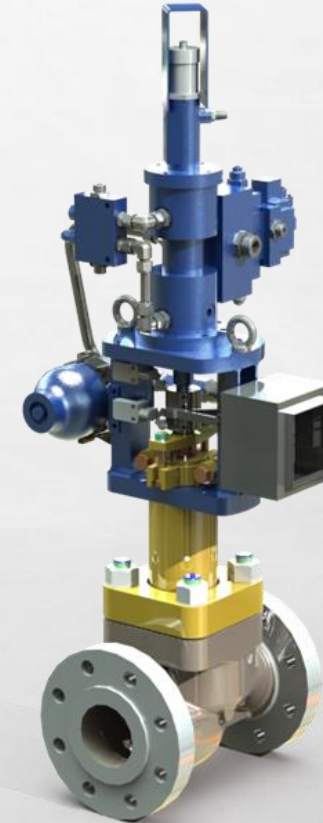


# ADVANCED ACTUATORS SMART TECHNOLOGY

Under 9com approval  
600010821  
600002902



# GulfTek



API-6A API-16A API-16C API-7-1 API-5CT  
API-4F API-7-2 API-Q1 ASME-U ASME-R

Excellence in Manufacturing  
& Engineering Services

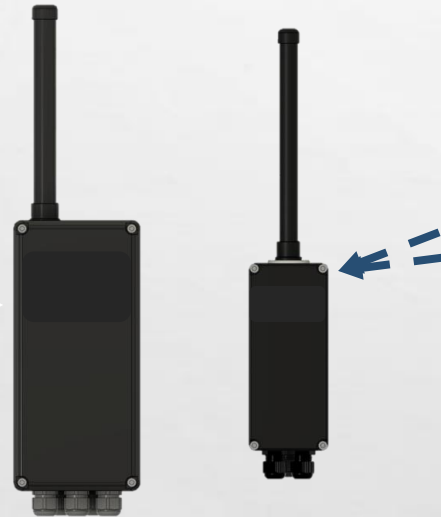
ISO 45001:2018 ISO 14001:2015  
ISO 9001:2015





# GulfTek

## SMART WIRELESS COMMUNICATION



API-6A API-16A API-16C API-7-1 API-5CT  
API-4F API-7-2 API-Q1 ASME-U ASME-R

**Excellence in Manufacturing  
& Engineering Services**

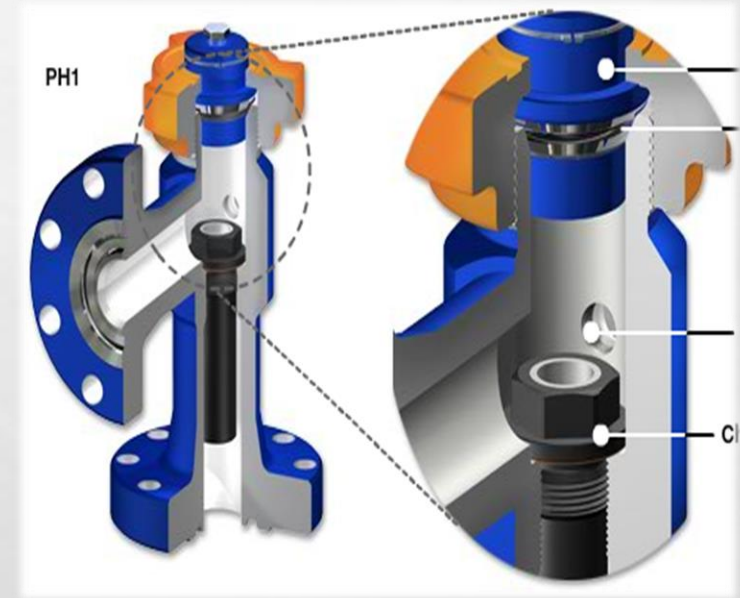
ISO 45001:2018 ISO 14001:2015  
ISO 9001:2015





# GulfTek

## CORTEC CHOKES & SERVICES



API-6A API-16A API-16C API-7-1 API-5CT  
API-4F API-7-2 API-Q1 ASME-U ASME-R

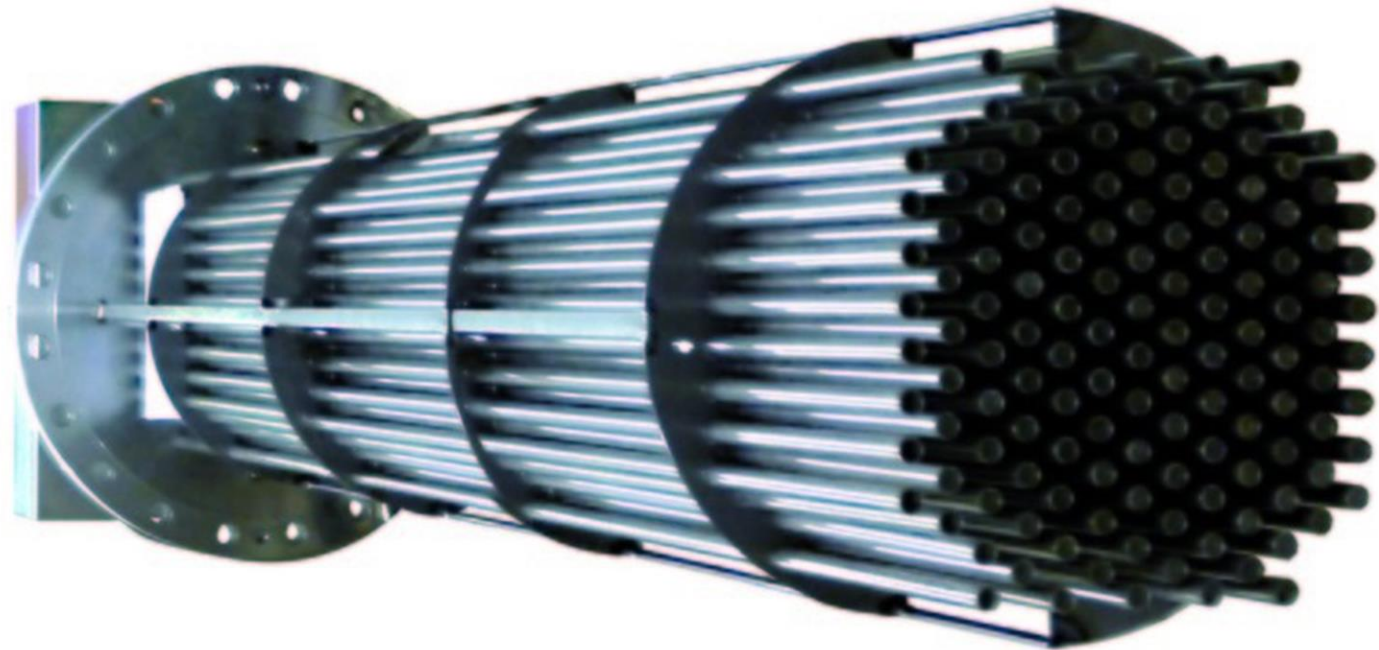
**Excellence in Manufacturing  
& Engineering Services**

ISO 45001:2018 ISO 14001:2015  
ISO 9001:2015

## **VULCANIC ELECTRIC HEATERS & SERVICES**

9COM Approved OOK

Under 9com approval  
for manufacture in  
kingdom



**API-6A API-16A API-16C API-7-1 API-5CT  
API-4F API-7-2 API-Q1 ASME-U ASME-R**

**Excellence in Manufacturing  
& Engineering Services**

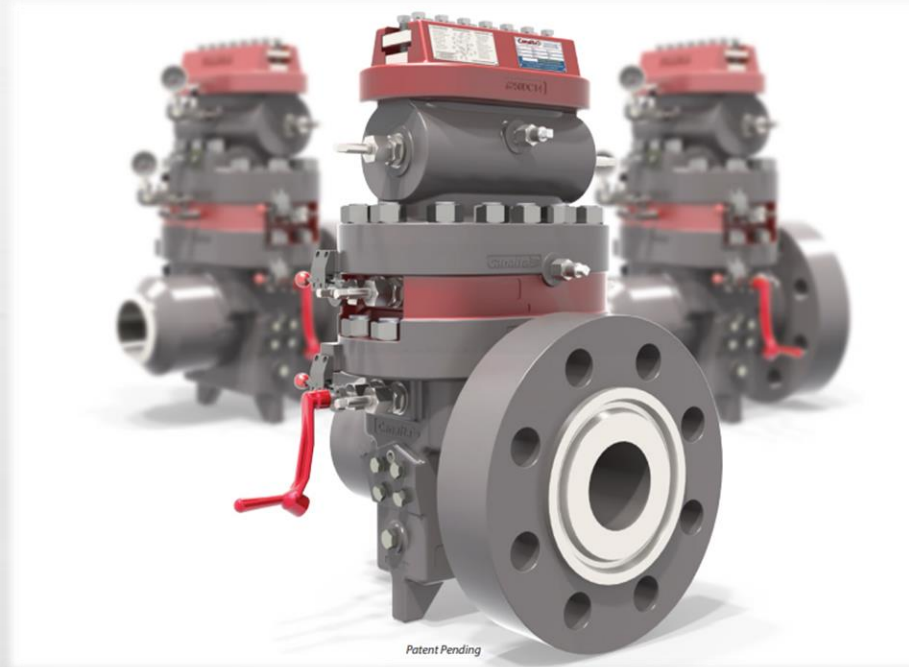
**ISO 45001:2018 ISO 14001:2015  
ISO 9001:2015**





# GulfTek

## CANALTA FLOW MEASUREMENT



API-6A API-16A API-16C API-7-1 API-5CT  
API-4F API-7-2 API-Q1 ASME-U ASME-R

**Excellence in Manufacturing  
& Engineering Services**

ISO 45001:2018 ISO 14001:2015  
ISO 9001:2015





**GulfTek**

# **REPAIR, TESTING, RECERTIFICATION & UPGRADE TO AWCM 7<sup>TH</sup> EDITION**



**API-6A API-16A API-16C API 7-1 API-5CT  
API-4F API 7-2 API-Q1 ASME-U ASME-R**

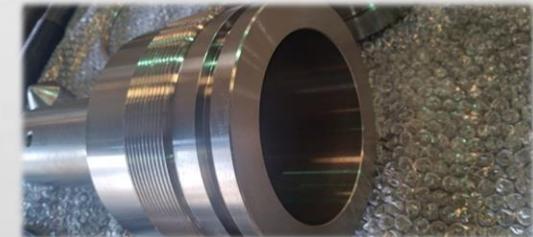
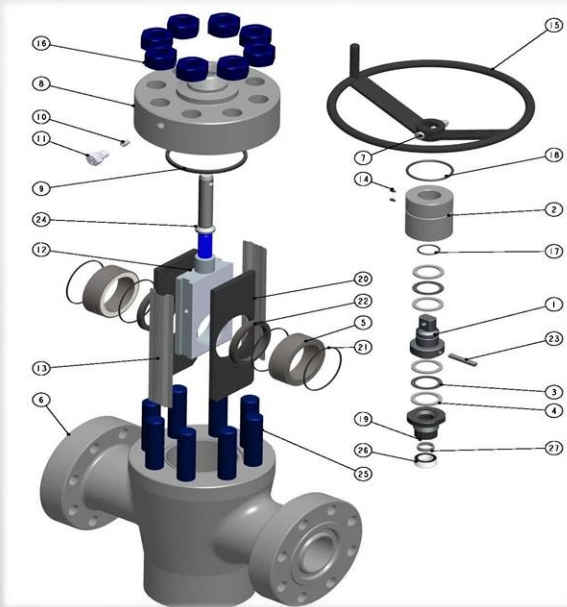
**Excellence in Manufacturing  
& Engineering Services**

**ISO 45001:2018 ISO 14001:2015  
ISO 9001:2015**



# GulfTek

## VALVE REPAIR, TESTING AND RECERTIFICATION



API-6A API-16A API-16C API 7-1 API-5CT  
API-4F API 7-2 API-Q1 ASME-U ASME-R

**Excellence in Manufacturing  
& Engineering Services**

ISO 45001:2018 ISO 14001:2015  
ISO 9001:2015





# GulfTek

## OFFSHORE, FIELD & NDT SERVICES



API-6A API-16A API-16C API 7-1 API-5CT  
API-4F API 7-2 API-Q1 ASME-U ASME-R

**Excellence in Manufacturing  
& Engineering Services**

ISO 45001:2018 ISO 14001:2015  
ISO 9001:2015





**GulfTek**

# **CONTROL VALVE REPAIR, TESTING AND RE-CERTIFICATION**



**API-6A API-16A API-16C API 7-1 API-5CT  
API-4F API 7-2 API-Q1 ASME-U ASME-R**

**Excellence in Manufacturing  
& Engineering Services**

**ISO 45001:2018 ISO 14001:2015  
ISO 9001:2015**



# GulfTek

## ROTATING EQUIP. SERVICES & SPARE PARTS



API-6A API-16A API-16C API 7-1 API-5CT  
API-4F API 7-2 API-Q1 ASME-U ASME-R

**Excellence in Manufacturing  
& Engineering Services**

ISO 45001:2018 ISO 14001:2015  
ISO 9001:2015

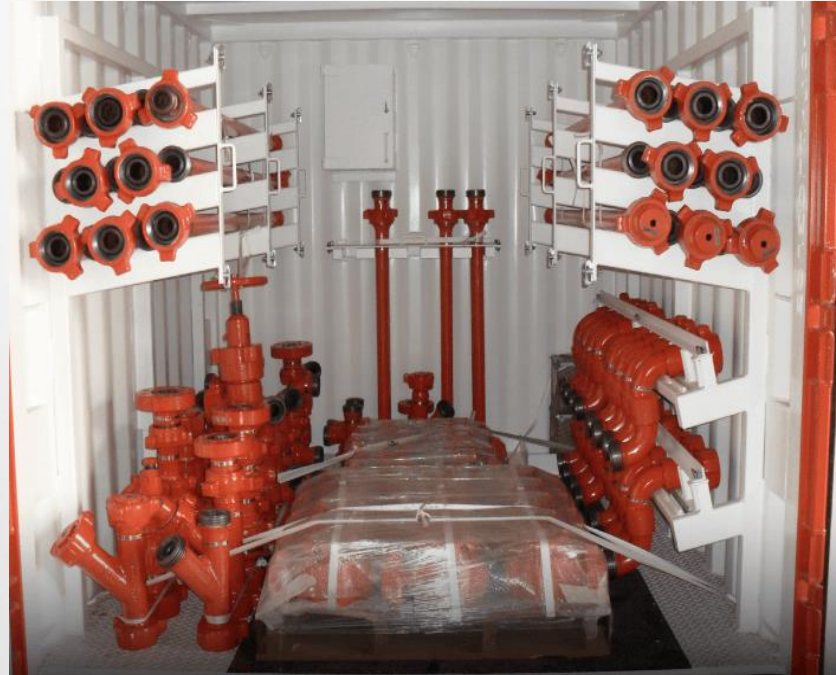




# GulfTek

## INTERVENTION RENTAL SERVICES

- Pressure Control Equipment
- Flow line, pup joints, plug valves
- Hoses, swivels, loops
- Pumps, Gate Valves
- Flow Meters
- Data logging
- Pressure Transducer



API-6A API-16A API-16C API 7-1 API-5CT  
API-4F API 7-2 API-Q1 ASME-U ASME-R

**Excellence in Manufacturing  
& Engineering Services**

ISO 45001:2018 ISO 14001:2015  
ISO 9001:2015



**GulfTek**

# **THANK YOU FOR TRUSTING US**

**API-6A API-16A API-16C API 7-1 API-5CT  
API-4F API 7-2 API-Q1 ASME-U ASME-R**

**Excellence in Manufacturing  
& Engineering Services**

**ISO 45001-2018 ISO 14001:2015  
ISO 9001:2015**